

# THE PARK

SANTA MONICA

RESIDENCE

## 616

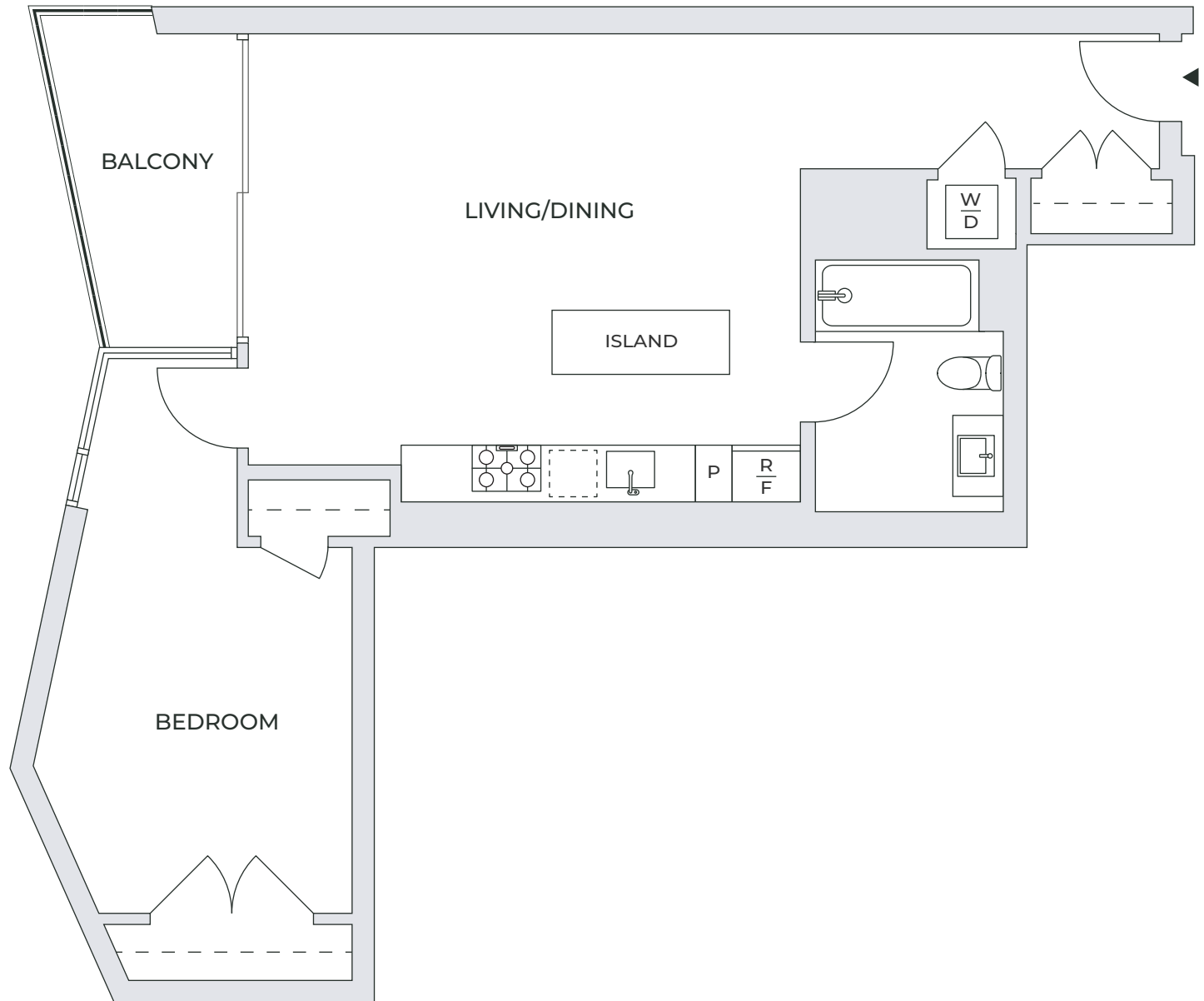
1 BEDROOM + 1 BATH

855 SQ. FT. INTERIOR

74 SQ. FT. EXTERIOR

### RESIDENCE FEATURES

- Custom Natural White Oak Wood Flooring
- Bosch Gas Cooktop
- Panelized Bosch Refrigerator & Dishwasher
- Quartz Countertops with Glass Tile Backsplash
- Bosch Washers/Dryer
- Natural Stone Surfaces & Double Sink\* in Primary Bath
- Light or Dark Walnut Vanities
- Floor-to-Ceiling Windows
- Elfa Custom Closet Systems
- Motorized Roller Shades\*
- 1GB Mesh Wifi
- A/C with Nest Thermostats
- Merv 13 Filters



\*Select Residences

TheParkSM.com • 500 Broadway, Santa Monica, CA 90401 • (424) 966-7275

WEST  
↓

Floor plans are drawn to varying scales to maximize visibility when printed. The floor plans, elevations, renderings, features, finishes and specifications are subject to change at any time. Square footage or floor areas shown in any marketing or other materials is approximate and may be more or less than the actual size. These materials should not be relied upon as representations, express or implied. The developer reserves the right to change floor plans, elevations, features, finishes and specifications at any time, without prior notice.