

THE PARK

SANTA MONICA

RESIDENCE

648

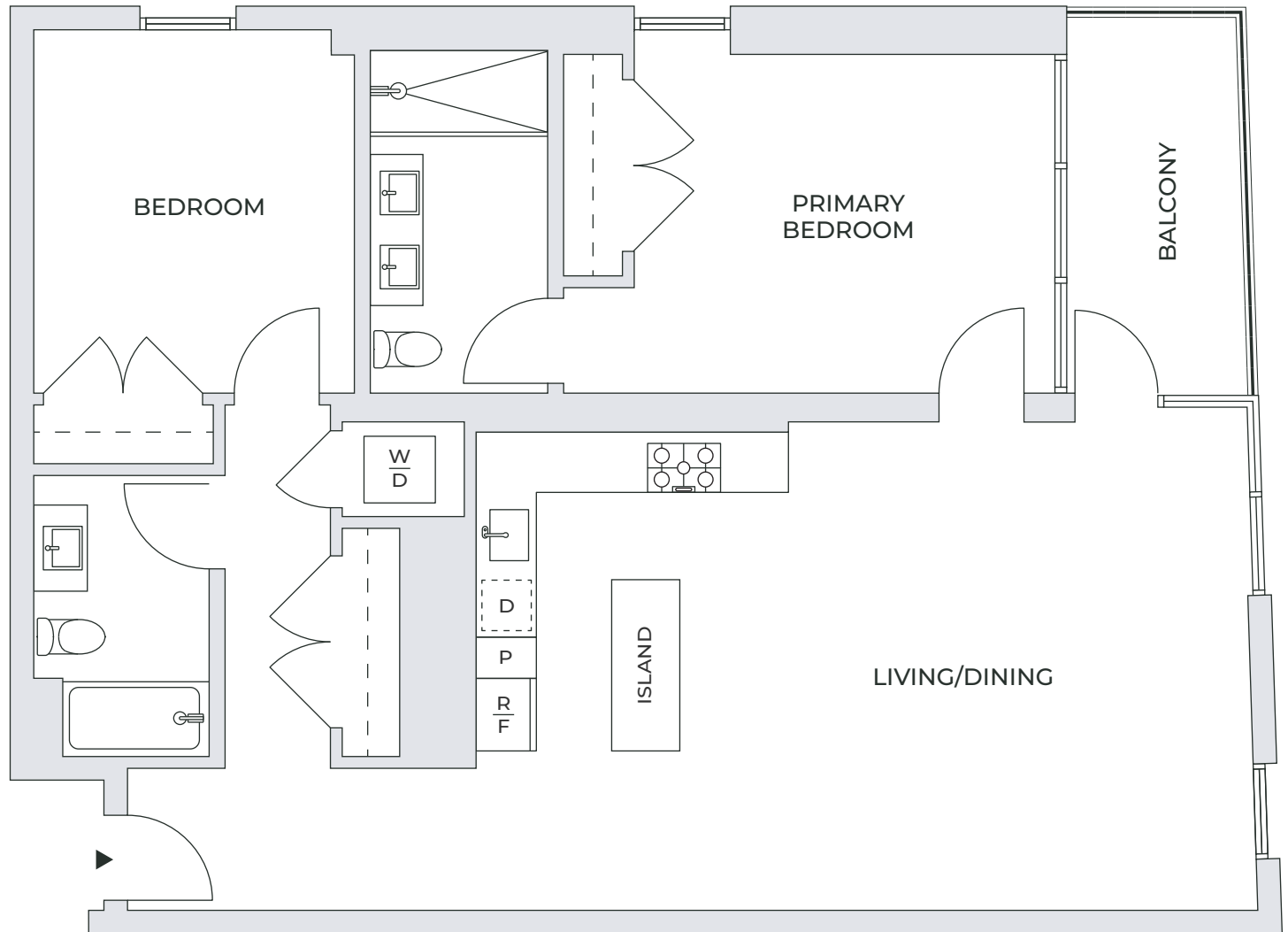
2 BEDROOM + 2 BATH

1281 SQ. FT. INTERIOR

87 SQ. FT. EXTERIOR

RESIDENCE FEATURES

- Custom Natural White Oak Wood Flooring
- Bosch Gas Cooktop
- Panelized Bosch Refrigerator & Dishwasher
- Quartz Countertops with Glass Tile Backsplash
- Bosch Washers/Dryer
- Natural Stone Surfaces & Double Sink* in Primary Bath
- Walnut Vanities
- Floor-to-Ceiling Windows
- Elfa Custom Closet Systems
- Motorized Roller Shades*
- 1GB Mesh Wifi
- A/C with Nest Thermostats
- Merv 13 Filters



*Select Residences